

# CHROMIX® P Admixtures

## for Color-Conditioned Concrete

Add beauty to both vertical and horizontal projects with CHROMIX® P Admixtures. The reliable, nonfading and consistent admixtures for cast-in-place and precast concrete have been proven to stand the test of time.

Available in three convenient forms:

- CHROMIX G (granular)
- CHROMIX L (liquid)
- CHROMIX P (powdered)

LITHOCHROME® Colorwax™ is available in matching colors.

**Review Tech-Data Bulletins and SDS before use.**

**Visit [www.scofield.com](http://www.scofield.com) for the most current versions.**

\* Shadow Slate is only available in CHROMIX P (powdered) form.

Colors shown approximate the color of broom-finished concrete flatwork made with a medium-gray cement and cured with LITHOCHROME Colorwax in the matching color. Concrete not so cured will have less brilliance.

Concrete should be batched and placed in accordance with Tech-Data Bulletins.

Concrete color is altered by many factors, including cement and aggregate color, slump, finishing practices, and curing method. Using the contemplated materials and construction techniques, representative samples should be cast for approval, especially when exact color matching is important.



C-31 Shadow Slate\*



C-37 Sunbaked Clay



C-38 Burnt Red



C-17 Earth Stone



C-284 Landmarks Gray



C-16 Winter Beige



C-19 Gray Stone



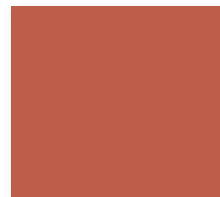
C-135 Summer Beige



C-10 Cool Gray



C-235 Autumn Beige



C-36 Sorrento Red



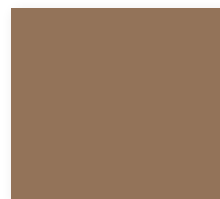
C-18 Spring Beige



C-14 French Gray



C-20 Limestone



C-27 Westwood Brown



C-15 Coachella Sand



C-24 Charcoal



C-25 Sombrero Buff



C-359 Barcelona Brown



C-11 Desert Sand



C-34 Dark Gray



C-12 Mesa Beige



C-30 Brownstone



C-21 Adobe Tan

### SIKA CORPORATION

SIKA SCOFIELD SALES OFFICE  
4155 SCOFIELD ROAD  
DOUGLASVILLE, GA 30134  
PHONE: 800-800-9900

© Sika Corporation / Concrete / 11.1300.2



A SIKA BRAND